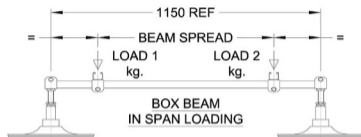
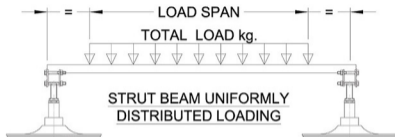


Beam Loading Table



MAX. LOAD kg.		LOAD SPAN mm.
200		300
210		400
235		600
285		900
350		1200

Note!
Minimum Span

MAX. LOAD kg. each		BEAM SPREAD min. mm.
100		50
105		150
117.5		250
142.5		300
175		450

Note!
Minimum Spread

